



(800) 541-1285
mike@sportsturfnnw.com

GreensGroomer®
WORLDWIDE

Artificial Turf Maintenance Equipment Brochure



#1 Artificial Turf Maintenance Equipment Manufacturer
GreensGroomer Worldwide



EFFECTIVE & EFFICIENT ARTIFICIAL TURF MAINTENANCE

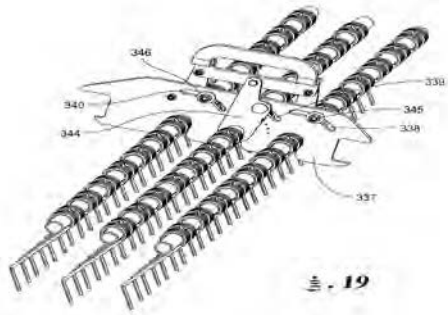


Murphie-Best Dog Ever

At GreensGroomer the belief is that Artificial Turf Safety, Playability and Aesthetics are a result of proper maintenance execution. Using the right methods and equipment saves time and reduces repair costs without sacrificing the integrity of the playing surface. Our product line focuses on simple engineering solutions to GreensGroomers turf maintenance equipment line of equipment.

"Low Mechanical Complexity and High Reliability" -Mike Davis Founder of GreensGroomer Worldwide

TAKING CARE OF YOUR SYNTHETIC SURFACE:



U.S. Patent 5,968,972 B2

MANAGING MAINTENANCE

Synthetic turf sports fields are in use year round. This requires a well-planned and executed maintenance program. Such a program is essential to provide safe, playable surfaces for athletes, band members as well as any other user of the field. A proper maintenance program is vital to protect the facility's investment.

It all comes down to managing infill, keeping consistent infill depth and relieving compaction. Proper maintenance also needs to include the extraction of foreign objects and reduction of microbial risk.



INFILL COMPACTION & DISTRIBUTION

With any synthetic system, the infill becomes compacted, causing increasing stress to be exerted on the fibers. This causes premature fiber wear and break-age. With proper grooming and raking, as well as proper equipment and techniques, infill can be redistributed and compaction relieved allowing the synthetic fibers to last longer under stress.

Lighter weight, softer fibers may show wear and breakage earlier than more expensive mono-filament variations. Regardless of the style of synthetic turf, proper groom-ing and raking extends the useful life of the surface. When synthetic surfaces first hit the market, many claims of zero maintenance were found to be far less realistic under real world conditions. Now that the synthetic market has matured, maintenance professionals realize an established maintenance routine is integral for maintaining the safety and playability of any synthetic field. A regular maintenance routine allows users to get the most out of the field, and allows the facility to get the most out of their investment.





860 MiniZapr

GREENSGROOMER LINE-UP & MAINTENANCE

The patent-pending angled brush design of the Synthetic Groomer allows for a more effective method of grooming. The super-duty blue brushes (which are standard on the Synthetic Groomer) move and re-distribute infill. Since it is a straight tow-behind unit, the brushes can stand turf fibers up and reorient infill in a more gentle manner than mechanized methods.

However, grooming and maintenance isn't complete without the attached Spring Tine Rake. Grooming alone does not totally relieve the compaction of the infill material. The angled tines on the rake, used in conjunction with the grooming brushes, allow both grooming and raking to be achieved, with no turf damage. At GreensGroomer, we view both as an integrated system.



TURF PROFILE

Most synthetic turf follows the same basic guideline to create its turf profile. The backing is placed on the field substrate, and then infill is applied into the “lower third” of the turf fibers. In some cases sand or other infill material is used in this base layer to “anchor” the turf. It is designed to be a firm, compact layer.

To finish the process, the infill material is added, where the “middle third” of the turf profile contains a slightly loose, softer layer of infill. This exposes the top of the synthetic fibers to define the “upper third”, the actual playing surface.

The Synthetic Groomer functions primarily in the “upper third”, but will move and groom infill within the top portion of the “middle third”. The Spring Tine rake functions primarily within the middle third layer to loosen infill, relieve compaction, and achieve the soft surface desired.

Most synthetic turf profiles are in the range of 2” to 2.5”.



926 Integrated Groomer with Tine Rakes

THE GREENSGROOMER® 926 INTEGRATED SYNTHETIC TURF GROOMER

GREENSGROOMER

GreensGroomer is the industry standard for sports turf groomers. It's built to be an extremely rugged unit, engineered to include the perfect performance features for turf maintenance. Perfect balance side to side and front to back, allowing smooth brushing with no hopping. The electric actuator provides almost infinite adjustment control, from wheels down transport to wheels up brushing.

The **GreensGroomer** is designed to properly condition synthetic turf surfaces while delivering labor efficiencies, ease of operation, and a lower total cost of ownership. Simple in design with heavy-duty construction, the focal point is the precise brush dimensions and angles. While standing up turf fibers, the infill material is moved in four directions, therefore re-leveling the playing surface.

- Stands Up Synthetic Fibers
- Works on All In-filled Surfaces
- Used in Wet and Dry Conditions
- Complete Re-leveling of Infill Material
- Four-Angled Brush Design
- Superior Balance for Consistent Grooming



SPRING TINE RAKE

The **Spring Tine Rake** (integrated into the 926) can also be purchased as an attachment for the GreensGroomer 920 as a traditional rear mount or as a front mount unit. It consists of 3 tine shafts with 42 adjustable tines set at 7/8 inch spacing intervals.

The tines comb through the settled infill, releasing trapped turf fibers, relieving compaction, and reorienting infill material. The **GreensGroomer** and **Spring Tine Rake** with Rear Brush Attachment insure a safe, level playing surface.

The GreensGroomer Integrated Unit (926 shown):

- Gently Combs Surface
- Rear Brush Attachment Provides Gentle Clean-up
- Eliminates Compaction
- Reorients Infill Material



A green and white LitterKat turf sweeper with a magnet attachment is shown on a synthetic turf field. The sweeper is mounted on a trailer and has a long, low profile. It features a green frame, white side panels, and a black magnet attachment at the rear. The turf field is green with white yard lines. In the background, there are blue stadium bleachers.

760 LitterKat Turf Sweeper with Magnet

THE GREENSGROOMER LITTERKAT® SYNTHETIC TURF SWEEPER + MAGNET

760 LitterKat Synthetic Sports Turf Debris Collector w/Sports Field Magnet

Removal of surface debris has never been easier. The **LitterKat** is designed to sweep up light debris from the surface of the turf with-out displacing infill material. It is the perfect choice for keeping your synthetic sports field clean, safe, and ready for action.

With dual 12-volt vibrators in the collection baskets, the **LitterKat** quickly and easily redistributes infill while collecting sports field debris. Debris like paper, pen & pencils, rocks, shoe spikes, athletic tape and sunflower seed shells. The collection baskets have a brushed aluminum finish and easy access doors for clean-out.

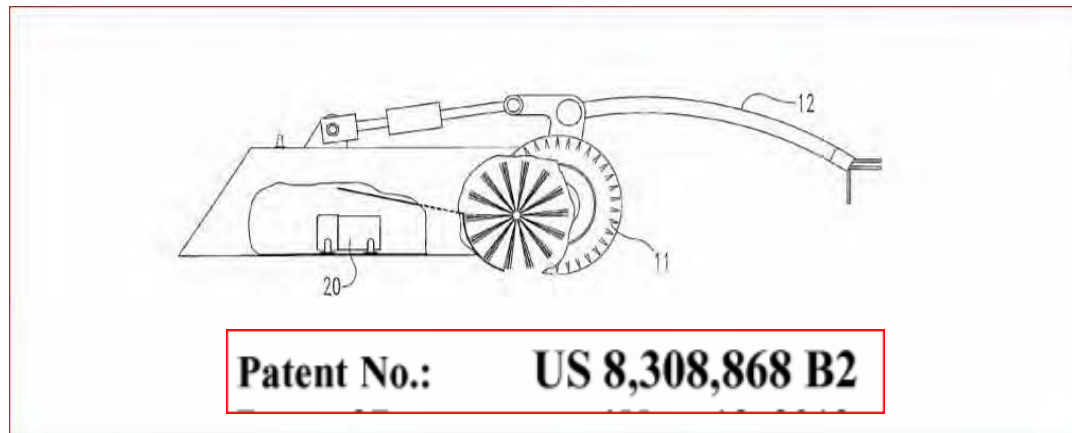
The **LitterKat** is also equipped with a tow-behind magnet for pickup of unwanted ferrous metal objects. The powerful 6-foot unit pulls objects from deep within the surface onto the magnet

— keeping dangerous objects like track spikes, bobby pins, safety pins and nails out of the infill material.

- **Fast and Effective Debris Pick-Up**
- **Recirculation of Infill Material**
- **Ground-Driven for Low Maintenance**
- **Easy Clean-Up and Wash Down Safe**
- **Magnet for Ferrous Metal Objects**



Original Drawing for The Patent Application



850 GreenZapr UVC Sterilizer



THE GREENSGROOMER GREENZAPR® UV-C SURFACE SANITIZER

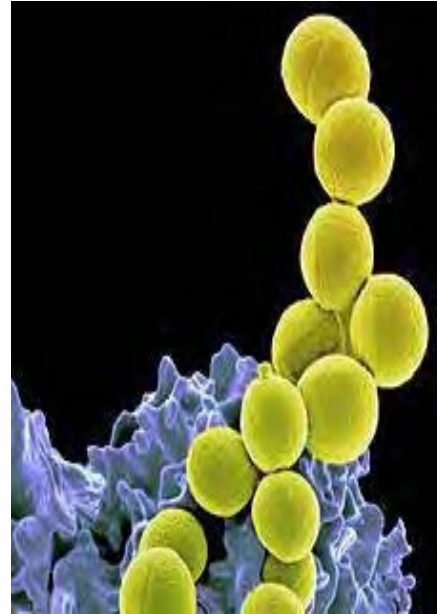
850 GreenZapr and 860 MiniZapr

The **GreenZapr** and **MiniZapr** represent a new paradigm in synthetic turf safety. Built around germicidal ultraviolet (UV-C) light, the **GreenZapr** and **MiniZapr** disinfect synthetic surfaces with powerful exposure, instantly de-destroying harmful micro-organisms. Viruses such as MRSA, Hepatitis, STAPH, and e coli to Salmonella, HIV and the Influenza viruses are destroyed.

Without a doubt, the **GreenZapr** creates the ultimate benchmark for field safety. The **MiniZapr** is also a great solution for interior spaces such as locker rooms, weight rooms, and other athletic areas where sterilization is needed.

The **GreenZapr** and **MiniZapr** are built with the same, high-quality fabrication our customers expect from GreensGroomer. The **GreenZapr** is powered by a portable Honda generator or optional rechargeable gel cell with the UVC lamps positioned into two reflector modules. The standard 3-pass treatment places over

Compared to other sanitation techniques, the **GreenZapr** is the most efficient, most cost-effective method available to the industry.



GERMICIDAL UV-C

Ultra-Violet Germicidal Irradiation (UVGI) is used extensively in a variety of applications such as food processing, as well as air and water purification. UVGI utilizes short-wavelength-ultraviolet radiation (UV-C) that is harmful to micro-organisms. It is effective in destroying the nucleic acids in organisms so that their DNA is disrupted by the radiation. This removes their reproductive capabilities and kills them instantly.

Each micro-organism has different traits or reactions to UV-C in terms of the amount of energy (or exposure) needed to break down the nucleic acids. In essence, the intensity of the UV-C light source, the distance from the light source to the target surface, and the amount of time the target is exposed all have to be balanced.

The **GreenZapr** and **MiniZapr** uses specifically designed UV-Clamps in order to eradicate these harmful micro-organisms (i.e., MRSA, HIV, Influenza). The pull behind **GreenZapr** unit incorporates a total of 16 UV-Clamps, that operate at a distance of 2.5" from the surface of the turf.



If you are reading this brochure then you are looking at the various artificial turf maintenance equipment options available for your field. This page is meant to add value in the form of knowledge and why buying commercial grade maintenance equipment is critical. The equipment you want needs to be manufactured in the USA as this is the best option.

The titles that you will see below are live titles, meaning you will be taken to the original article on the Sports Turf Northwest website should you click the title. If you print this brochure and want to read the articles, piece of cake. Simply goto the website **www.sportsturfsw.com** and the **Must Read** menu tab will bring you to the source. Or You May Simply Click on The Blue Links To Read-**Happy Reading**

Why GreensGroomer Equipment Is The Best And Why You Need To Read Links Below

- **[You're Spending A Million Bucks On Your Artificial Turf Project So Shouldn't You Maintain It?](#)**
- **[The Consequences Of A "NO Maintenance" Mindset For Synthetic Turf Fields](#)**
- **[Disinfecting Synthetic Turf Fields Without Using Chemicals](#)**
- **[Synthetic Turf Is A Sustainable Solution](#)**
- **[Who Should Choose Your Turf Maintenance Equipment?](#)**
- **[GreensGroomer Equipment Is Made In The USA](#)**

The Next Few Articles Are About Safety and Prevention of Staph and MRSA

- **[Trust The Center For Disease Control When It Comes To Facts About MRSA and STAPH](#)**
- **[Are Synthetic Turf Fields Full of Bacterial Pathogens Like Staph?](#)**
- **[Indoor Soccer Arenas Are A Toxic Petri Dish Of Human Bodily Fluids](#)**
- **[Artificial Turf Manufacturers Need To Come Clean To Schools and Parks](#)**

Not All Articles Are Serious-Golf Lovers You Will Enjoy This Article

- **[Whisper Rock Golf Club-From The Outside Looking In \(Sarcastic Read of A Private Club\)](#)**



Need A Quote or Need More Information?

Contact-Mike Woelfel (800) 541-1285 Option 1

mike@sportsturfnc.com

www.sportsturfnc.com